

THE LEXINGTON CEMETERY

As a result of the cholera plagues in the early nineteenth century, Lexington citizens realized the need for additional burial space. In 1849, Boswell's Woods was purchased by 25 public-spirited members of the community who contributed \$500 each.

After the cemetery was in operation, each of the original incorporators was repaid his contribution with interest.

It has no connection with the city government of Lexington, and it has remained an independent, non-profit organization. It has been administered by a board of directors.

Since the first burial in 1849, over 67,000 interments have been made. Many distinguished Kentuckians have been memorialized within the beautiful grounds. Among them are:

(M) **HENRY CLAY** (1777-1852), statesman, lawyer, and one of the most famous orators of all time, served his country for 27 years as a Congressman and Senator from Kentucky and for four years as Secretary of State.

(G) **JOHN C. BRECKINRIDGE** (1821-1875) was the youngest man to serve as Vice-President of the United States. He also served as Secretary of War of the Confederate States of America.

(D) **JAMES LANE ALLEN** (1849-1925) immortalized the Bluegrass with his stories in *The Blue Grass Region of Kentucky*. His story "The Flute and Violin" told the story of **WILLIAM "KING" SOLOMON** (1775-1854), who was a local hero of the cholera plague of 1833.

(C) **GENERAL JOHN HUNT MORGAN** (1825-1864) was the colorful "Thunderbolt of the Confederacy."

(F) The **TODD's**, the family of Mrs. Abraham Lincoln, helped create the early Lexington community and the state of Kentucky.

(O) **COLONEL W.C.P. BRECKINRIDGE** (1837-1904), lawyer, soldier, editor, orator, statesman, was called the "silver-tongued orator."

(D) **COLONEL JAMES MORRISON** (died 1823) was a Revolutionary War soldier and donor of Morrison Chapel at Transylvania College.

(D) **MISS MARY DESHA** (1850-1911) co-founded the Daughters of the American Revolution.

(G) **DR. BENJAMIN W. DUDLEY** (1785-1871), "the great surgeon of Kentucky," pioneered in the surgical technique of lithotomy.

(9) **JOHN B. BOWMAN** (1824-1891) founded the University of Kentucky.

(13) **JAMES THOMAS COTTON NOE** (1864-1953) educator, philosopher, and lecturer, was named poet laureate of Kentucky by action of the General Assembly of Kentucky in 1926.

(G) **MARY BRECKINRIDGE** (1881-1965) founded and directed the Frontier Nursing Service.

(45) **COACH ADOLPH RUPP** (1901-1977) was U.K. basketball's "Winningest Coach."

(E-2) **'STAR OF REMEMBRANCE'** Childrens Holocaust Memorial

More than 500 Confederate and 1,100 Union Veterans are interred here in section P and section N.

Today The Lexington Cemetery encompasses 170 acres. It serves the entire community with burial services including grave spaces, two public mausoleums, a columbarium, and a crematory. A perpetual care endowment insures that the cemetery will remain a place of serenity for the community of Lexington.

The Lexington Cemetery has a national reputation for being one of the most beautiful cemeteries in America. Beginning with the ornamental cherries, magnolias, crab apples and dogwood of early spring through to late fall, a steady succession of flowering trees, shrubs, bulbs and plants delights thousands of visitors. Three lakes are interesting with their waterfowl and goldfish. A variety of gardens includes the sunken garden and a flower garden which covers almost three acres. There are over 200 species of trees within the grounds. The Audubon Society of Kentucky has identified 179 species of birds within the cemetery.

The Lexington Cemetery is listed in the American Automobile Association's Southeastern Tour Guide, the Mobile Oil Company's Tour Guide, the Invitation to Visit America's Gardens, published by the National Association of State Garden Clubs, and the Handbook of American Gardens, published by the Brooklyn Botanical Gardens.

OFFICE HOURS

Weekdays 8:00 a.m. - 4:00 p.m.
Saturdays 8:00 a.m. - Noon

Available for Purchase

Burial Lots
Mausoleum Crypts
Columbarium Niches
Scattering Garden

Also Available

Crematory Services
Interest-free financing for
pre-need purchases
Special Care Endowments

BOARD OF DIRECTORS

James G. Kenan III, Chairman
Alma Ethington, Vice Chairperson
Michael L. Ades
Anthony B. Alphin, Jr.
Harriett Dupree Bradley
Robert M. Brewer
Joseph C. Graves, Jr.
S.T. Roach
W.T. Young, Jr.
Theodore R. Broida, Director Emeritus
Pamela G. Miller, Director Emeritus

A CEMETERY IS

more than a graveyard. It is a chain by which families extend themselves—death does not sever the links between generations. A cemetery is the physical manifestation of the most dignified ritual of civilization—the honoring of lives whose worth should not be forgotten.

A cemetery documents the social, political, cultural and military history of a community. The markers are the repository of the past and the inspiration for the future. A cemetery gives us the ability to go forward not forgetting those who have made our way possible.

The great civilizations that are most remembered are those which have preserved their heritage in lasting memorials. Egypt has its pyramids and tombs. Inscribed stone stelae of the Greeks tell the stories of their lives, and Rome's Appian Way is lined with the remains of the tombs and monuments to the dead. Man has an innate desire to be remembered. In our society, a cemetery is the place for memorialization. One of the hallmarks of a great cemetery is the permanence of its edifices.

The Lexington Cemetery is dedicated to preserving the memories of the people of our community. It is a place for those who love tradition and the recognition of people for their sacrifices and contributions to family, friends, and community. Each person is important enough to be remembered. The Lexington Cemetery is a landmark. Its purpose is to preserve the natural beauty of the site and provide a place for generations of families to commemorate their lineages with structures which will withstand the ravages of time.

The Lexington Cemetery offers grave spaces, mausoleum crypts, columbarium niches for urns containing cremated remains and a cremation scattering garden. The selection of a final resting place should not be left to the time when fate demands decisions. It should be done at a time when personal inspection and thoughtful investigation are not overwhelmed by grief.

Memorialization is important in two ways. It preserves the memory of a once vital person, and it helps the living through the stages of grief.

Psychiatrists have identified seven stages of grief, denial, emotional release, loneliness, guilt, panic, hostility, and acceptance.

Burial services and the accompanying traditional funeral rites help our families through that process. By observing the funeral services and customs, we stop denying the death. The services provide a natural time for the releasing of our emotional feelings. Knowing where the body of our loved one has been placed and being able to visit the site helps us to assuage our loneliness. Having provided for a suitable memorial helps in alleviating the guilt which is a natural part of the process. Visiting the gravesite in the serenity of the beautiful grounds can help soothe the panic and hostility of this period. As we begin to accept our loss, the comfort of knowing that our loved one has been properly remembered and provided for allows us to live again with the memory of the lessons from our departed.

A WORD ABOUT CREMATION. . .

Cremation is a popular method of disposal of the dead. It is a valid preparation of the body. But it is not the end. The question is what to do with the remains. Keeping the remains in a box in the attic or closet only postpones finding a permanent solution to the problem.

The Lexington Cemetery provides choices for placement of cremated remains. A niche in a columbarium with a space for one, two or even an entire family is available. Each niche has an inscription which memorializes the departed. Interment in a single burial site or in a family lot is also possible. A marker can be placed here for future generations to view with love and respect for those family members that have gone on before. A scattering garden with memorialization for those families wishing to have cremated remains made a part of nature, has been designed. The Lexington Cemetery is dedicated to serving the burial and memorialization needs of the community.

RULES IN BRIEF

Children under 18 must be accompanied by an adult responsible for their behavior.

Bicycles and motorcycles are not permitted on the grounds. They can be parked at the gate.

All pets must be kept on leashes.

Picnicking, drinking, sports activities, and sunbathing are not permitted.

Speed limit is 20 M.P.H.

Remember, you are visiting. Please have respect for the Cemetery whose main purpose is to provide a peaceful place for those buried here and for their families. The Cemetery grounds are not public property and not a public park.

THE LEXINGTON CEMETERY has information available on the following subjects:

Trees

Activities with Children in The Lexington Cemetery

Bird Checklist

Memorialization

Cremation

Endowed Care

Mausoleum Entombment

History of Lexington in The Lexington Cemetery

Columbarium Niches

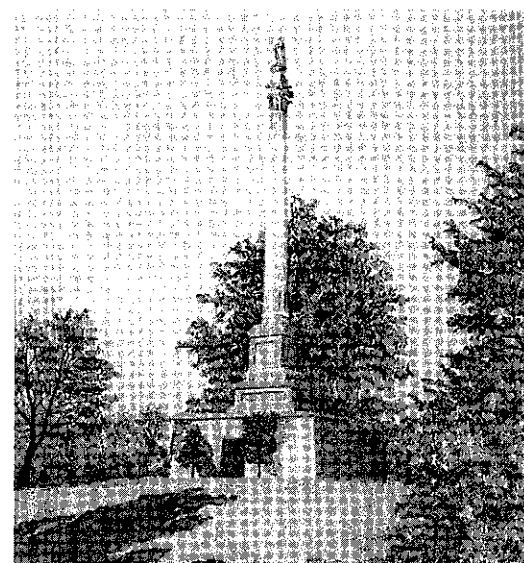
Information and Prices of Cemetery Lots

Cleaning of Monuments or Markers

Cremation Scattering Garden

If you would like to receive without obligation information about these subjects, please call us at (859) 255-5522 or mail your request to The Lexington Cemetery, 833 West Main Street, Lexington, Kentucky 40508.

The Lexington Cemetery



Serving
Central
Kentuckians
Since 1849

THE LEXINGTON CEMETERY
833 WEST MAIN STREET
LEXINGTON, KENTUCKY 40508
(859) 255-5522
www.lexcem.org